



Assessment and Testing

Survey of Alumni of Graduate Programs 2003-2009

Combined Highlights

The OSU Survey of Alumni of Graduate Programs, conducted every other year, provides data to gauge perceptions of various aspects of graduate programs and services and to identify areas where improvements may be needed. A detailed report of each survey can be obtained from the Office of University Assessment and Testing. This brochure summarizes selected items from surveys conducted in 2003, 2005, and 2007, and 2009.

Population: The total of alumni in the target populations was 8,385. Each survey since 2003 targeted alumni who completed their degrees one year prior to the survey and five years prior to the survey.

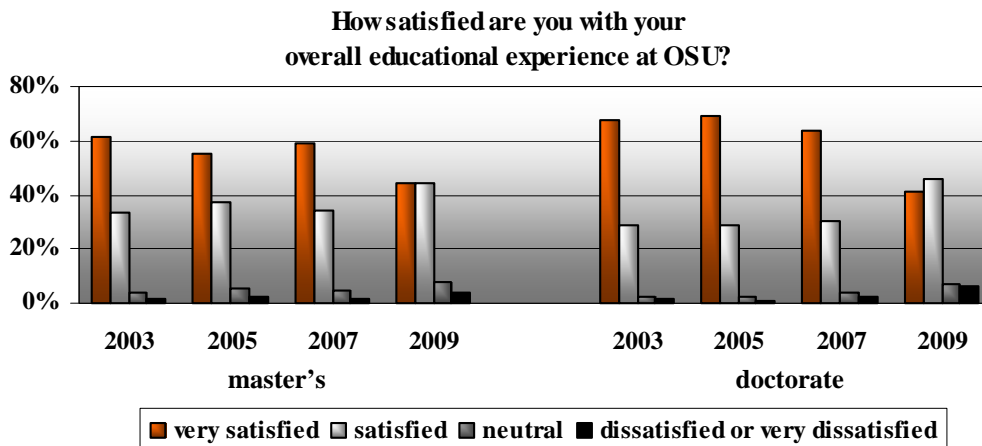
Methods: In 2003 through 2007, the OSU Bureau for Social Research conducted the survey as a telephone interview and coordinated data collection. In 2009 the office of University Assessment and Testing (UAT) administered the survey as an online survey and as a telephone interview and coordinated data collection. In all years UAT analyzed and summarized data, and prepared reports of the results.

Results: A total of 3,360 surveys were completed by alumni of graduate programs, resulting in a 40% response rate over all years.

GENERAL INFORMATION

Survey Year	Population	Sample Size		Overall Response Rate	Adjusted Response Rate*
		(Master's)	(Doctorate)		
2003	1,912	623	162	41%	79%
2005	2,187	643	144	36%	69%
2007	2,091	658	141	38%	69%
2009	2,195	822	167	45%	82%

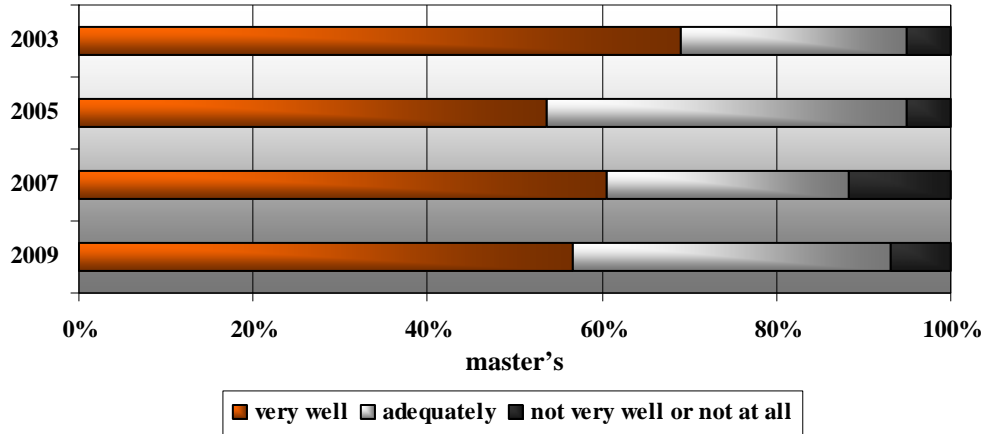
OVERALL SATISFACTION



Across survey years, those reporting that they were 'very satisfied' or 'satisfied' with their overall educational experience at OSU ranged from 88-95% of master's alumni and 87-97% of doctoral alumni.

CONTINUING EDUCATION

In general, how well did your OSU graduate program prepare you for your next graduate or professional school program?

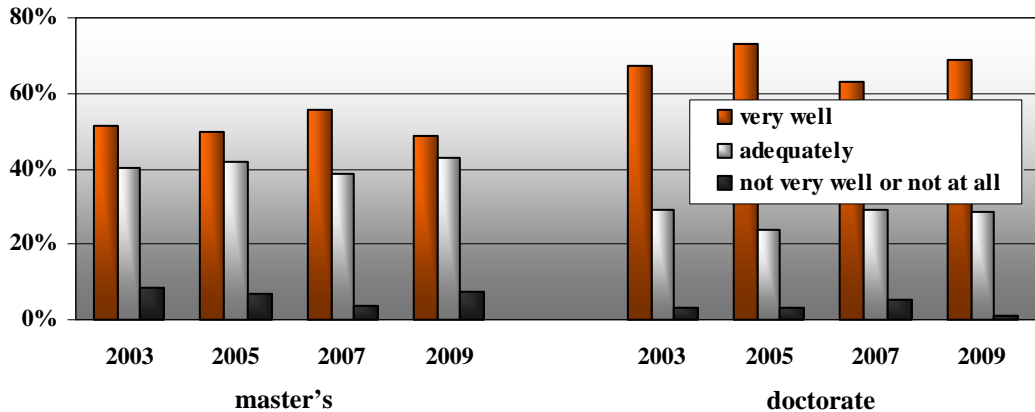


The percentage of master's graduates who say that their graduate studies prepared them 'very well' or 'adequately' for their next graduate or professional school program has fluctuated from 85-95% across survey years. Between 19-21% of master's and 4.2-9.2% of doctoral alumni were enrolled in or had completed a further graduate or professional degree program.

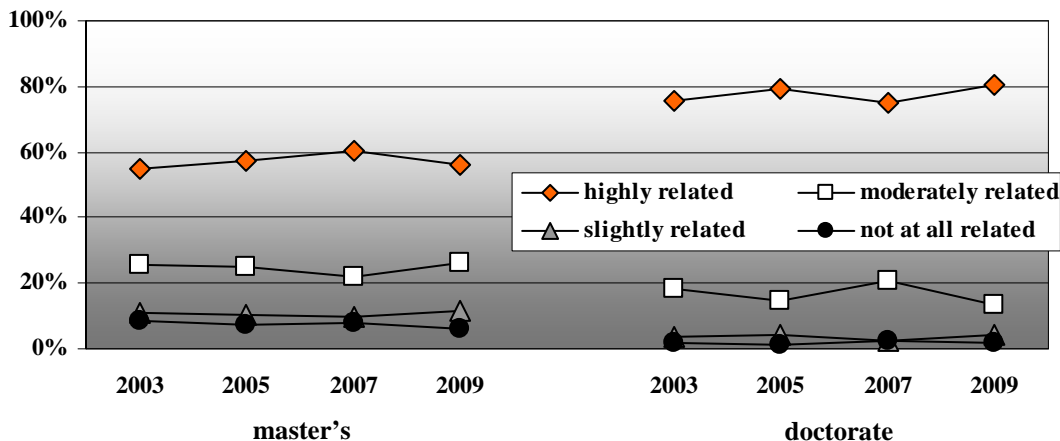
PREPARATION FOR CAREER

Across survey years, 92-95% of master's and 93-97% of doctoral alumni say that their graduate studies prepared them 'very well' or 'adequately' for their current position (this excludes alumni who said that their current position was 'not at all related' to their OSU major).

In general, how well did your OSU graduate program prepare you for your current position?



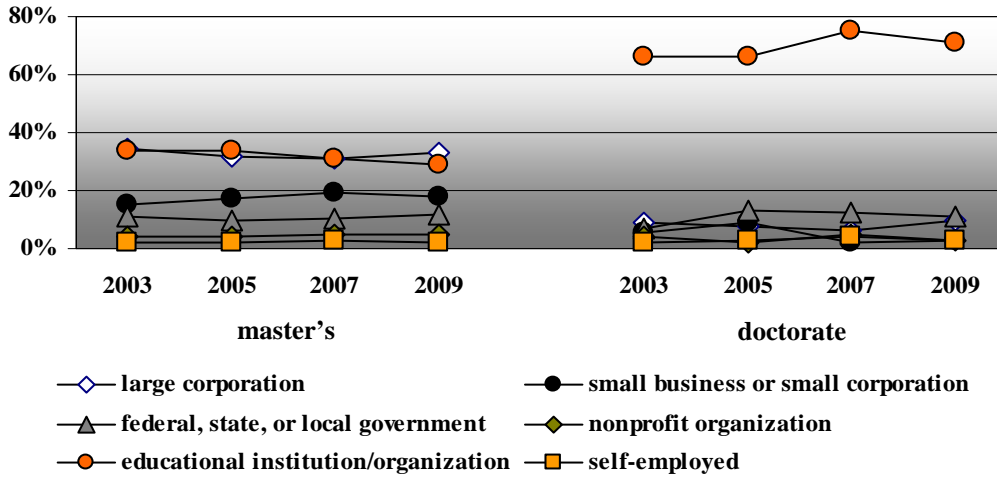
How closely is your current position related to your OSU major?



55-60% of master's graduates report that their current position is 'highly related' to their OSU major. The percentage of doctoral graduates responding in kind is consistently higher, from 75-80%.

EMPLOYMENT DEMOGRAPHICS

Which of the following best describes your employer?



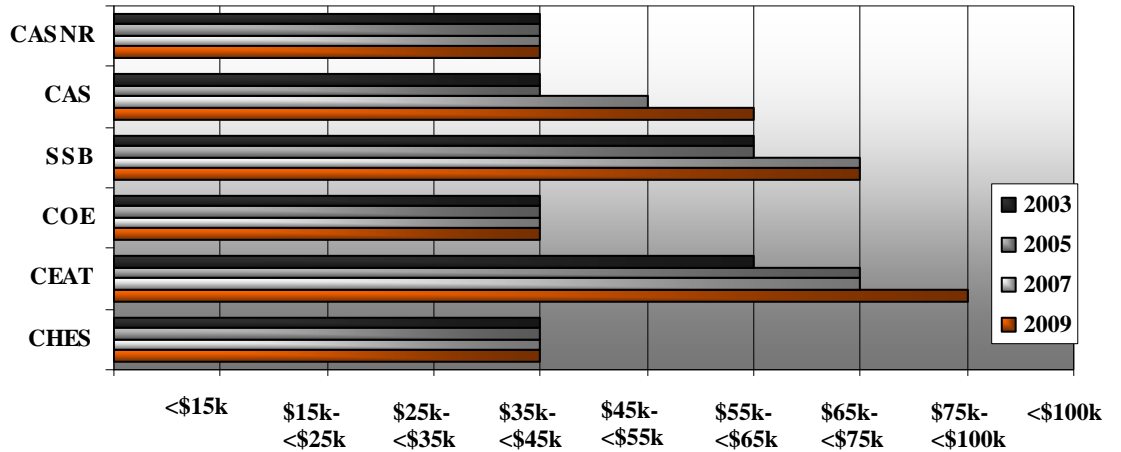
Educational institutions remain the top employers of OSU doctoral alumni, while large corporations rose to the top position in employing master's alumni.

For most colleges, Ph.D. alumni consistently report a higher median salary than master's graduates.

CEAT and SSB alumni are consistently the highest earners of all OSU graduate alumni.

Master's or doctoral status appears to have the largest wage impact on alumni of the College of Education, where mean salaries fell between \$35,000-\$44,999 and at least \$55,000-\$64,999, respectively.

median salary by college - master's



median salary by college - doctorate

