



America's Brightest **ORANGE**

Oklahoma State University

University Assessment and Testing

2016 Survey of Alumni of Undergraduate Programs

Ryan Chung, Ph.D.
Director

Kelva Hunger, M.S.
Assistant Director, Assessment and Analysis

James Knecht, M.S.
Assistant Director, Testing and Technology

Jhapendra Sapkota
Graduate Research Assistant

February 2018

Table of Contents

Overview.....	1
Response Rate.....	1
Residency.....	1
Employment.....	1
Continuing Education	1
Overall Satisfaction.....	2
Methods.....	3
Instrument Design	3
Survey Administration.....	3
Results.....	4
Response Rate	4
Current Employment Information	11
Employment Status	11
Continuing Education and Graduate / Professional School Information.....	20
Names of Graduate or Professional Schools Attended by Alumni.....	213
Overall Satisfaction	257
Residency	30

Overview

Response Rate

2,229 alumni responded to the survey from the target population of 7,710 undergraduate alumni who graduated either in 2010 or 2014 for an absolute response rate of 28.9%. After removing alumni who had invalid telephone numbers, the overall adjusted response rate was 31.1%.

Residency

2,075 alumni provided information about their current residence location. Of these respondents, about 67% resided in Oklahoma, while about 23% resided in surrounding states (Texas, Kansas, Colorado, Missouri, Arkansas, and New Mexico).

Employment

86.3% (n = 1915) of responding alumni were currently employed. Only 4% of the total respondents were currently seeking employment¹. In June of 2016, the seasonally adjusted unemployment rate for the state of Oklahoma was 5.0% (Bureau of Labor Statistics², 2016). Of the employed alumni, 90.9% were employed full-time. 35.8% of those who were employed were employed by large corporations, 27.2% were employed in a small business or small corporation, and educational institutions employed 20.6%. The remaining alumni reported employment with the federal government, state government, local government, nonprofit organizations, or were self-employed. About 68.7% of alumni reported their current position was either moderately or highly related to their degree. 92.3% of alumni reported their undergraduate degree prepared them adequately or very well for their current position.

Salary

The most frequently reported annual salary range for alumni who graduated five years ago and were employed full time was “\$75,000 but less than \$100,000” (16.7% of alumni reported this income range). The next most frequently reported salary range for alumni who graduated in 2010 was “\$45,000 but less than \$55,000” (16.1% of alumni reported this income range). The most frequently reported annual salary range for alumni who graduated one year ago and were employed full time was “\$25,000 but less than \$35,000” (22.8% of alumni reported this income range). The next most frequently reported salary range for alumni who graduated in 2014 was “\$45,000 but less than \$55,000” (17.6% of alumni reported this income range). Overall (both 2010 and 2014), 45.0% of all survey respondents who were employed full time reported salaries of \$35,000 or greater, but less than \$65,000. 23.4% of respondents who were employed full time reported salaries less than \$35,000, and 25.4% reported salaries of \$65,000 or greater. In comparison, the average annual wage in Oklahoma in 2016 was \$43,779.00 (Oklahoma Employment Security Commission³, 2016).

Continuing Education

30.8% of survey respondents reported they were either currently enrolled in another degree program or had already completed a subsequent degree beyond the bachelor’s degree earned at OSU. Most of these respondents indicated they had either completed or were in the process

¹ The remaining alumni were either employed, unemployed but not seeking employment, or did not answer the question.

² Retrieved 01/29/2018 from <https://data.bls.gov/pdq/SurveyOutputServlet>

³ Retrieved 01/29/2018 from http://www.ok.gov/oesc_web/Services/Unemployment_Insurance/Taxable_Wage_Base_and_Rates.html

of completing a Master's degree (59.7%), followed by medical (10.6%) and doctoral degrees (8.4%). 91.7% of these alumni reported their undergraduate degree had prepared them very well or adequately for their graduate/professional degree program.

Overall Satisfaction

92% of respondents were satisfied or very satisfied with the quality of instruction at Oklahoma State University. 73.9% were satisfied or very satisfied with academic advising and a little more than 93% reported that they were either satisfied or very satisfied with their overall educational experience at Oklahoma State University.

Methods

The target population for this survey included everyone who received an undergraduate degree from OSU in 2010 or 2014; therefore, alumni were contacted approximately one and five years after graduating from OSU. The survey was conducted from January to June of 2016. The total number of alumni in the target population was 7,710. The response rates for individual degree programs are shown below.

Instrument Design

The survey instrument was developed by the University Assessment and Academic Improvement Council and the individual academic departments that participated in the survey. The first part of the survey, called the 'common questions,' was given to all alumni. It included questions on current employment, continuing education, and overall satisfaction. The second part of the survey was developed by each participating department and was only given to alumni from that department. This part of the survey focused on specific aspects of alumni's degree programs. If an alumnus' degree program did not provide program-specific questions, he or she was asked 8 general questions developed by the Office of University Assessment and Testing that focused on the perceived satisfaction, effectiveness, strengths, weaknesses, and quality of his or her OSU experience. This report summarizes alumni's responses to the common questions.

Survey Administration

The survey was administered online and through telephone interviews. The Office of Institutional Research and Information Management provided alumni's email addresses and telephone numbers. The Office of University Assessment and Testing (UAT) sent three rounds of survey emails in January and conducted telephone interviews from February through May 2016. The final email reminder was sent in May 2016 and the survey administration closed in June 2016.

Results

This section summarizes results from the 2016 Survey of Alumni of Undergraduate Programs for the common questions. The Office of University Assessment & Testing performed data analyses and compiled reports. Results of department-specific survey questions were summarized in separate reports prepared for each participating department. The department-specific reports were sent to each department and are made publicly available on the University Assessment and Testing website (<http://uat.okstate.edu>).

Response Rate

A total of 2,229 participants responded from the target population of 7,710 alumni who graduated in either 2010 or 2014 for an overall response rate of 28.9%. Response rates for each college and degree program are summarized in Table 1. An adjusted response rate was calculated to examine the response rate when excluding those alumni who were deemed “unreachable⁴.” When accounting for “unreachable” alumni the overall adjusted response rate was 31.1%.

https://apex.it.okstate.edu/pls/apex/ws?p=9500:REPORTS_BY_COLLEGE:14297039917449

⁴ An alumnus was deemed “unreachable” if there were no valid phone numbers. We had no way to determine whether or not email messages were received.

Table 1. Number of alumni in the target population (undergraduate recipients from 2010 and 2014), number of completed surveys, and response rates for each college and participating degree program.

	Number of Alumni	Number of Completed Surveys	Response Rate (%)	Adjusted Response Rate (%)
The Entire Survey Population	7710	2229	28.9	31.1
College of Agricultural Sciences and Natural Resources				
All CASNR	933**	327	35.0	37.3
Agricultural Business	131	47	35.9	37.6
Agricultural Communications	50	19	38.0	37.8
Agricultural Economics	37	16	43.2	45.7
Agricultural Education	66	28	42.4	45.9
Agricultural Leadership	36	11	30.6	34.4
Animal Science	365	123	33.7	35.5
Biochemistry & Molecular Biology	53	19	35.8	36.5
Entomology	1	1	100	100
Environmental Sciences	28	11	39.3	39.3
General Studies	12	4	33.3	40.0
Horticulture	13	2	15.4	15.4
Landscape Architecture	28	12	42.9	52.2
Landscape Contracting	7	1	14.3	16.7
Natural Resource Ecology and Management	80	22	27.5	30.1
Plant and Soil Sciences	26	11	42.3	50.0

*Due to a low response rate (n<3) data was not collected for this major

**This total does not reflect colleges that were not included due to a low response rate.

Note: Response rate is the number of completed surveys divided by the number of alumni from 2008 and 2012. The adjusted response rate is the number of completed surveys divided by the number of alumni who were 'reachable' (i.e. alumni who responded to a survey email or for whom UAT was provided a valid U.S. telephone number). Exact numbers of non-reachable alumni are available to individual programs upon request.

	Number of Alumni	Number of Completed Surveys	Response Rate (%)	Adjusted Response Rate (%)
--	------------------	-----------------------------	-------------------	----------------------------

College of Arts and Sciences

	Number of Alumni	Number of Completed Surveys	Response Rate (%)	Adjusted Response Rate (%)
All CAS	1953**	582	29.8	31.9
American Studies	8	3	37.5	42.9
English	109	30	27.5	29.7
Foreign Language	43	13	30.2	34.2
General Studies	293	89	30.4	33.6
Geography	24	8	33.3	33.3
Geology	53	16	30.2	35.6
History	64	18	28.1	29.5
Integrative Biology	115	38	33.0	34.9
Mathematics	18	13	72.2	81.3
Philosophy	12	2	16.7	20.0
Political Science	103	21	20.4	21.9
Psychology	263	86	32.7	34.0
School of Journalism & Broadcasting	318	92	28.9	29.9
Sociology	130	45	34.6	37.5
Statistics	5	2	40.0	66.7
Theatre	25	5	20.0	20.8

*Due to a low response rate (n<3) data was not collected for this major

**This total does not reflect colleges that were not included due to a low response rate.

	Number of Alumni	Number of Completed Surveys	Response Rate (%)	Adjusted Response Rate (%)
--	------------------	-----------------------------	-------------------	----------------------------

College of Education

	Number of Alumni	Number of Completed Surveys	Response Rate (%)	Adjusted Response Rate (%)
All COE	843**	240	28.5	30.4
Athletic Training	38	13	34.2	34.2
Aviation Sciences	19	3	15.8	18.8
Elementary Education	226	74	32.7	35.9
General Studies	242	72	29.8	31.2
Health Promotion	122	35	28.7	31.0
Physical Education	27	5	18.5	19.2
Recreation Management & Therapeutic Recreation	41	11	26.8	26.8
Teaching, Leadership, & Learning	128	27	21.1	22.7

*Due to a low response rate (n<3) data was not collected for this major

**This total does not reflect colleges that were not included due to a low response rate.

	Number of Alumni	Number of Completed Surveys	Response Rate (%)	Adjusted Response Rate (%)
College of Engineering, Architecture and Technology				
All CEAT	1067	347	32.5	35.5
Architecture	84	17	20.2	21.8
Biosystems & Agricultural Engineering	38	14	36.8	38.9
Chemical Engineering	86	30	34.9	40.0
Civil & Environmental Engineering	77	29	37.7	40.8
Construction Management Technology	78	26	33.3	37.1
Electrical & Computer Engineering	97	31	32.0	35.2
Electrical Engineering Technology	40	14	35.0	40.0
Fire Protection & Safety Technology	100	38	38.0	41.8
General Studies	6	2	33.3	33.3
Industrial Engineering & Management	46	19	41.3	43.2
Mechanical & Aerospace Engineering	311	92	29.6	32.5
Mechanical Engineering Technology	104	35	33.7	35.0

	Number of Alumni	Number of Completed Surveys	Response Rate (%)	Adjusted Response Rate (%)
College of Human Sciences				
All College of Human Sciences	834	220	26.4	28.7
Apparel Design & Production	21	5	23.8	25.0
Dietetics Program	36	12	33.3	36.4
General Studies	34	10	29.4	31.3
Hotel & Restaurant Management	190	39	20.5	24.8
Human Development & Family Science	253	76	30.0	31.1
Interior Design	66	20	30.3	34.5
Merchandising	87	20	23.0	24.1
Nutritional Science	147	38	25.9	27.1

	Number of Alumni	Number of Completed Surveys	Response Rate (%)	Adjusted Response Rate (%)
Spears School of Business				
All SSB	2038	502	24.8	26.7
Accounting	368	93	25.3	26.9
Dean of Business Admin	129	24	18.6	20.3
Economics & Legal Studies	191	50	26.2	28.4
Entrepreneurship	50	15	30.0	31.3
Finance	231	54	23.4	25.5
Management	534	144	27.0	28.9
Marketing	378	87	23.0	24.8
Management Science & Information System	141	35	24.8	26.9

Current Employment Information

86.3% (n = 1915) of respondents indicated they were currently employed (CQ1). 4% of respondents were seeking employment. Of employed alumni, 90.9% were employed full-time (CQ4). 35.8% were employed by large corporations, 27.2% were employed with a small business or small corporation, 20.6% were employed by educational institutions, 2.7% were employed by the federal government, 4.7% were employed by nonprofit organizations, and 3.2% were self-employed. 3.4% of respondents were employed by state government, and local government (CQ3) employed 1.3%.

Overall (both 2010 and 2014), 45.0% of all survey respondents who were employed full time reported salaries of \$35,000 or greater, but less than \$65,000. 23.4% of respondents who were employed full time reported salaries less than \$35,000, and 25.4% reported salaries of \$65,000 or greater. 68.7% of alumni indicated their current position was either moderately or highly related to their degree. 92.8% of alumni reported that their undergraduate degree prepared them adequately or very well for their current position.

Employment Status

		2010		2014	
CQ1. Are you currently employed?		n	%	n	%
Yes		741	90.0%	1174	84.0%
No		76	9.2%	216	15.5%
Prefer not to answer		6	0.7%	7	0.5%

Responses by College	2010		2014	
	n	%	n	%
CASNR				
Yes	117	95.1%	164	80.8%
No	4	3.3%	39	19.2%
Prefer not to answer	2	1.6%	0	0.0%
CAS				
Yes	191	86.4%	281	76.6%
No	29	13.1%	84	22.9%
Prefer not to answer	1	0.5%	2	0.5%
SSB				
Yes	92.1	92.1%	280	90.0%
No	7.9	7.9%	29	9.3%
Prefer not to answer	0	0.0%	2	0.6%

	2010		2014	
	n	%	n	%
COE				
Yes	71	86.6%	142	89.3%
No	10	12.2%	17	10.7%
Prefer not to answer	1	1.2%	0	0.0%
CEAT				
Yes	105	90.5%	207	89.6%
No	9	7.8%	21	9.1%
Prefer not to answer	2	1.7%	3	1.3%
Human Sciences				
Yes	82	90.1%	100	79.4%
No	9	9.9%	26	20.6%
Prefer not to answer	0	0.0%	0	0.0%

		2010		2014	
CQ2. Are you currently seeking employment? ⁵		n	%	n	%
Yes		27	32.9%	62	28.1%
No		54	65.9%	158	71.5%
Prefer not to answer		1	1.2%	1	0.5%

Responses by College	2010		2014	
CASNR	n	%	n	%
Yes	3	50.0%	4	10.3%
No	3	50.0%	35	89.7%
Prefer not to answer	0	0.0%	0	0.0%

CAS	n	%	n	%
Yes	5	16.7%	23	27.1%
No	25	83.3%	61	71.8%
Prefer not to answer	0	0.0%	1	1.2%

SSB	n	%	n	%
Yes	6	40.0%	11	35.5%
No	8	53.3%	20	64.5%
Prefer not to answer	1	6.7%	0	0.0%

	2010		2014	
COE	n	%	n	%
Yes	2	18.2%	5	29.4%
No	9	81.8%	12	70.6%
Prefer not to answer	0	0.0%	0	0.0%

CEAT	n	%	n	%
Yes	7	63.6%	14	60.9%
No	4	36.4%	9	39.1%
Prefer not to answer	0	0.0%	0	0.0%

Human Sciences	n	%	n	%
Yes	4	44.4%	5	19.2%
No	5	55.6%	21	80.8%
Prefer not to answer	0	0.0%	0	0.0%

⁵ Question was only asked to those alumni who were not currently employed.

CQ3. Which of the following best describes your employer?	2010		2014	
	n	%	n	%
Large corporation	238	32.6%	436	37.8%
Small business or corporation	214	29.3%	297	25.8%
Federal government	27	3.7%	23	2.0%
State government	25	3.4%	39	3.4%
Local government	14	1.9%	11	1.0%
Nonprofit organization	34	4.7%	54	4.7%
Educational institution or organization	134	18.4%	254	22.0%
Self-employed	35	4.8%	25	2.2%
Prefer not to answer	9	1.2%	13	1.1%

Responses by College	2010		2014	
	n	%	n	%
CASNR				
Large corporation	24	20.5%	48	30.2%
Small bus. or corp.	31	26.5%	47	29.6%
Federal government	10	8.5%	5	3.1%
State government	6	5.1%	11	6.9%
Local government	3	2.6%	0	0.0%
Nonprofit organization	1	0.9%	10	6.3%
Educ. inst. or org.	28	23.9%	35	22.0%
Self-employed	13	11.1%	3	1.9%
Prefer not to answer	1	0.9%	0	0.0%

COE	2010		2014	
	n	%	n	%
Large corporation	14	21.2%	35	24.8%
Small bus. or corp.	10	15.2%	12	8.5%
Federal government	2	3.0%	2	1.4%
State government	3	4.5%	2	1.4%
Local government	2	3.0%	3	2.1%
Nonprofit organization	4	6.1%	4	2.8%
Educ. inst. or org.	28	42.4%	81	57.4%
Self-employed	2	3.0%	2	1.4%
Prefer not to answer	1	1.5%	0	0.0%

CAS	2010		2014	
	n	%	n	%
Large corporation	47	25.1%	73	26.3%
Small bus. or corp.	57	30.5%	76	27.3%
Federal government	2	1.1%	8	2.9%
State government	11	5.9%	13	4.7%
Local government	3	1.6%	4	1.4%
Nonprofit organization	12	6.4%	13	4.7%
Educ. inst. or org.	44	23.5%	76	27.3%
Self-employed	8	4.3%	9	3.2%
Prefer not to answer	3	1.6%	6	2.2%

CEAT	2010		2014	
	n	%	n	%
Large corporation	46	44.7%	108	53.7%
Small bus. or corp.	33	32.0%	63	31.3%
Federal government	9	8.7%	4	2.0%
State government	2	1.9%	6	3.0%
Local government	4	3.9%	1	0.5%
Nonprofit organization	0	0.0%	2	1.0%
Educ. inst. or org.	3	2.9%	9	4.5%
Self-employed	4	3.9%	5	2.5%
Prefer not to answer	2	1.9%	3	1.5%

CQ3. Which of the following best describes your employer? (continued)

Responses by College	2010		2014	
	<u>n</u>	<u>%</u>	<u>n</u>	<u>%</u>
SSB				
Large corporation	75	42.9%	146	53.3%
Small bus. or corp.	63	36.0%	80	29.2%
Federal government	3	1.7%	1	0.4%
State government	3	1.7%	2	0.7%
Local government	2	1.1%	2	0.7%
Nonprofit organization	7	4.0%	13	4.7%
Educ. inst. or org.	12	6.9%	25	9.1%
Self-employed	8	4.6%	3	1.1%
Prefer not to answer	2	1.1%	2	0.7%

Human Sciences	2010		2014	
	<u>n</u>	<u>%</u>	<u>n</u>	<u>%</u>
Large corporation	32	39.0%	26	26.3%
Small bus. or corp.	20	24.4%	19	19.2%
Federal government	1	1.2%	3	3.0%
State government	0	0.0%	5	5.1%
Local government	0	0.0%	1	1.0%
Nonprofit organization	10	12.2%	12	12.1%
Educ. inst. or org.	19	23.2%	28	28.3%
Self-employed	0	0.0%	3	3.0%
Prefer not to answer	0	0.0%	2	2.0%

2016 OSU Survey of Alumni of Undergraduate Programs

		2010		2014	
CQ4. Are you employed full-time or part-time?		<u>n</u>	<u>%</u>	<u>n</u>	<u>%</u>
	Full-time	692	94.0%	1029	88.9%
	Part-time	41	5.6%	126	10.9%
	Prefer not to answer	2	0.4%	3	0.3%

Responses by College	2010		2014	
CASNR	<u>n</u>	<u>%</u>	<u>n</u>	<u>%</u>
Full-time	109	94.0%	141	88.1%
Part-time	7	6.0%	19	11.9%
Prefer not to answer	0	0.0%	0	0.0%

CAS	<u>n</u>	<u>%</u>	<u>n</u>	<u>%</u>
Full-time	176	92.1%	227	81.4%
Part-time	13	6.8%	52	18.6%
Prefer not to answer	2	1.0%	0	0.0%

SSB	<u>n</u>	<u>%</u>	<u>n</u>	<u>%</u>
Full-time	168	96.0%	258	93.8%
Part-time	7	4.0%	16	5.8%
Prefer not to answer	0	0.0%	1	0.4%

	2010		2014	
COE	<u>n</u>	<u>%</u>	<u>n</u>	<u>%</u>
Full-time	65	92.9%	123	86.6%
Part-time	4	5.7%	18	12.7%
Prefer not to answer	1	1.4%	1	0.7%

CEAT	<u>n</u>	<u>%</u>	<u>n</u>	<u>%</u>
Full-time	102	99.0%	193	95.5%
Part-time	1	1.0%	8	4.0%
Prefer not to answer	0	0.0%	1	0.5%

Human Sciences	<u>n</u>	<u>%</u>	<u>n</u>	<u>%</u>
Full-time	72	88.9%	87	87.0%
Part-time	9	11.1%	13	13.0%
Prefer not to answer	0	0.0%	0	0.0%

2016 OSU Survey of Alumni of Undergraduate Programs

CQ5. How closely is your current position related to your undergraduate studies at OSU?	2010		2014	
	n	%	n	%
Not at all related	113	15.3%	164	14.1%
Slightly related	123	16.7%	192	16.6%
Moderately related	153	20.8%	272	23.4%
Highly related	348	47.2%	530	45.7%
Prefer not to answer	0	0.0%	2	0.2%

Responses by College	2010		2014	
	n	%	n	%
CASNR				
Not at all related	20	17.1%	28	17.5%
Slightly related	16	13.7%	26	16.3%
Moderately related	27	23.1%	36	22.5%
Highly related	54	46.2%	70	43.8%
Prefer not to answer	0	0.0%	0	0.0%

CAS	2010		2014	
	n	%	n	%
Not at all related	37	19.4%	75	26.9%
Slightly related	47	24.6%	65	23.3%
Moderately related	42	22.0%	50	17.9%
Highly related	65	34.0%	88	31.5%
Prefer not to answer	0	0.0%	1	0.4%

SSB	2010		2014	
	n	%	n	%
Not at all related	11	6.3%	22	7.9%
Slightly related	30	17.1%	42	15.2%
Moderately related	51	29.1%	97	35.0%
Highly related	83	47.4%	116	41.9%
Prefer not to answer	0	0.0%	0	0.0%

COE	2010		2014	
	n	%	n	%
Not at all related	14	20.0	22	15.5
Slightly related	9	12.9	15	10.6
Moderately related	8	11.4	13	9.2
Highly related	39	55.7	91	64.1
Prefer not to answer	0	0.0	1	0.7

CEAT	2010		2014	
	n	%	n	%
Not at all related	5	4.9%	8	4.0%
Slightly related	10	9.7%	26	12.9%
Moderately related	15	14.6%	58	28.7%
Highly related	73	70.9%	110	54.5%
Prefer not to answer	0	0.0%	0	0.0%

Human Sciences	2010		2014	
	n	%	n	%
Not at all related	26	32.1%	9	9.0%
Slightly related	11	13.6%	18	18.0%
Moderately related	10	12.3%	18	18.0%
Highly related	34	42.0%	55	55.0%
Prefer not to answer	0	0.0%	0	0.0%

CQ6. In general, how well did your OSU undergraduate program prepare you for your current position? ⁶	2010		2014	
	<u>n</u>	<u>%</u>	<u>n</u>	<u>%</u>
Not at all	4	0.6%	24	2.4%
Not very well	29	4.6%	58	5.8%
Adequately	304	48.7%	444	44.7%
Very well	286	45.8%	458	46.1%
Prefer not to answer	1	0.2%	9	0.9%

Responses by College	2010		2014	
	<u>n</u>	<u>%</u>	<u>n</u>	<u>%</u>
CASNR				
Not at all	0	0.0%	3	2.3%
Not very well	3	3.1%	10	7.6%
Adequately	52	53.6%	67	50.8%
Very well	42	43.3%	51	38.6%
Prefer not to answer	0	0.0%	1	0.8%

CAS	2010		2014	
	<u>n</u>	<u>%</u>	<u>n</u>	<u>%</u>
Not at all	1	0.6%	11	5.4%
Not very well	9	5.8%	23	11.4%
Adequately	78	50.6%	86	42.6%
Very well	65	42.2%	80	39.6%
Prefer not to answer	1	0.6%	2	0.5%

SSB	2010		2014	
	<u>n</u>	<u>%</u>	<u>n</u>	<u>%</u>
Not at all	2	1.2%	1	0.4%
Not very well	8	4.9%	7	2.7%
Adequately	89	54.3%	127	49.8%
Very well	65	39.6%	119	46.7%
Prefer not to answer	0	0.0%	1	0.4%

COE	2010		2014	
	<u>n</u>	<u>%</u>	<u>n</u>	<u>%</u>
Not at all	1	1.8%	5	4.2%
Not very well	6	10.7%	5	4.2%
Adequately	25	44.6%	41	34.5%
Very well	24	42.9%	67	56.3%
Prefer not to answer	0	0.0%	1	0.8%

CEAT	2010		2014	
	<u>n</u>	<u>%</u>	<u>n</u>	<u>%</u>
Not at all	0	0.0%	2	1.0%
Not very well	3	3.1%	5	2.6%
Adequately	38	38.8%	82	42.3%
Very well	57	58.2%	103	53.1%
Prefer not to answer	0	0.0%	2	1.0%

Human Sciences	2010		2014	
	<u>n</u>	<u>%</u>	<u>n</u>	<u>%</u>
Not at all	0	0.0%	2	2.2%
Not very well	0	0.0%	8	8.8%
Adequately	22	40.0%	41	45.1%
Very well	33	60.0%	38	41.8%
Prefer not to answer	0	0.0%	2	2.2%

⁶ Does not include alumni who said their current position was "not at all" related to their major.

CQ7. What is your approximate total annual salary, including bonuses? ⁷	2010		2014	
	n	%	n	%
<\$15k	6	0.9%	22	2.3%
\$15,000 - <\$25k	6	0.9%	51	5.2%
\$25,000 - <\$35k	77	11.6%	223	22.8%
\$35,000 - <\$45k	103	15.5%	162	16.6%
\$45,000 - <\$55k	107	16.1%	172	17.6%
\$55,000 - <\$65k	79	11.9%	116	11.9%
\$65,000 - <\$75k	68	10.2%	66	6.8%
\$75,000 - <\$100k	111	16.7%	71	7.3%
>\$100k	70	10.5%	32	3.3%
Prefer not to answer	39	5.9%	62	6.3%

Responses by College	2010		2014	
	n	%	n	%
CASNR				
<\$15,000	1	1.0%	4	2.9%
\$15,000 but <\$25,000	0	0.0%	14	10.2%
\$25,000 but <\$35,000	10	9.9%	33	24.1%
\$35,000 but <\$45,000	22	21.8%	33	24.1%
\$45,000 but <\$55,000	20	19.8%	22	16.1%
\$55,000 but <\$65,000	15	14.9%	13	9.5%
\$65,000 but <\$75,000	13	12.9%	6	4.4%
\$75,000 but <\$100,000	9	8.9%	4	2.9%
Over \$100,000	5	5.0%	2	1.5%
Prefer not to answer	6	5.9%	6	4.4%

COE	2010		2014	
	n	%	n	%
<\$15,000	0	0.0%	2	1.7%
\$15,000 but <\$25,000	2	3.2%	5	4.3%
\$25,000 but <\$35,000	14	22.2%	50	43.1%
\$35,000 but <\$45,000	18	28.6%	21	18.1%
\$45,000 but <\$55,000	10	15.9%	17	14.7%
\$55,000 but <\$65,000	6	9.5%	3	2.6%
\$65,000 but <\$75,000	1	1.6%	5	4.3%
\$75,000 but <\$100,000	3	4.8%	6	5.2%
Over \$100,000	5	7.9%	1	0.9%
Prefer not to answer	4	6.3%	6	5.2%

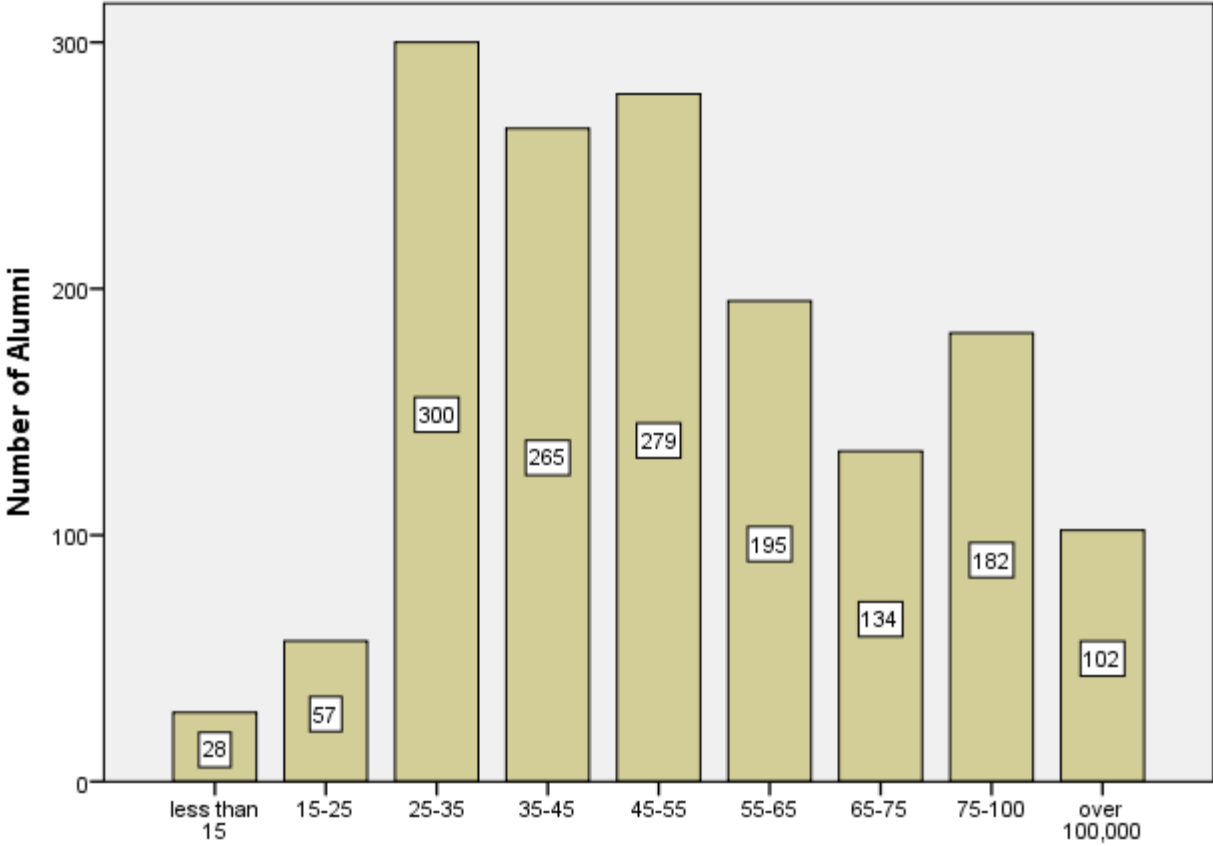
CAS	2010		2014	
	n	%	n	%
<\$15,000	4	2.4%	11	5.0%
\$15,000 but <\$25,000	3	1.8%	19	8.7%
\$25,000 but <\$35,000	25	14.9%	78	35.6%
\$35,000 but <\$45,000	38	22.6%	40	18.3%
\$45,000 but <\$55,000	34	20.2%	30	13.7%
\$55,000 but <\$65,000	20	11.9%	12	5.5%
\$65,000 but <\$75,000	11	6.5%	3	1.4%
\$75,000 but <\$100,000	11	6.5%	3	1.4%
Over \$100,000	13	7.7%	5	2.3%
Prefer not to answer	9	5.4%	18	8.2%

CEAT	2010		2014	
	n	%	n	%
<\$15,000	0	0.0%	0	0.0%
\$15,000 but <\$25,000	0	0.0%	1	0.6%
\$25,000 but <\$35,000	0	0.0%	5	2.8%
\$35,000 but <\$45,000	2	2.1%	5	2.8%
\$45,000 but <\$55,000	2	2.1%	25	13.9%
\$55,000 but <\$65,000	13	13.4%	41	22.8%
\$65,000 but <\$75,000	12	12.4%	41	22.8%
\$75,000 but <\$100,000	44	45.4%	37	20.6%
Over \$100,000	18	18.6%	14	7.8%
Prefer not to answer	6	6.2%	11	6.1%

⁷ Includes only alumni employed full time, including those who were employed and in graduate school.

CQ7. What is your approximate total annual salary, including bonuses? (continued)

SSB	2010		2014		Human Sciences	2010		2014	
	n	%	n	%		n	%	n	%
<\$15,000	0	0.0%	4	1.6%	<\$15,000	1	1.4%	1	1.3%
\$15,000 but <\$25,000	0	0.0%	4	1.6%	\$15,000 but <\$25,000	1	1.4%	8	10.1%
\$25,000 but <\$35,000	9	5.4%	29	11.8%	\$25,000 but <\$35,000	19	26.8%	28	35.4%
\$35,000 but <\$45,000	9	5.4%	43	17.5%	\$35,000 but <\$45,000	14	19.7%	20	25.3%
\$45,000 but <\$55,000	31	18.7%	64	26.0%	\$45,000 but <\$55,000	10	14.1%	14	17.7%
\$55,000 but <\$65,000	14	8.4%	45	18.3%	\$55,000 but <\$65,000	11	15.5%	2	2.5%
\$65,000 but <\$75,000	26	15.7%	11	4.5%	\$65,000 but <\$75,000	5	7.0%	0	0.0%
\$75,000 but <\$100,000	35	21.1%	21	8.5%	\$75,000 but <\$100,000	9	12.7%	0	1.0%
Over \$100,000	29	17.5%	10	4.1%	Over \$100,000	0	0.0%	0	0.0%
Prefer not to answer	13	7.8%	15	6.1%	Prefer not to answer	1	1.4%	6	7.6%



Salary Reported by Alumni Employed Full Time (in thousands)

Continuing Education and Graduate / Professional School Information

30.8% of survey respondents reported they were either currently enrolled in another degree program or had already completed a subsequent degree after graduating from OSU (CQ10). Most of these respondents indicated they had either completed or were in the process of completing a Master’s degree (59.7%), followed by medical (10.6%) and doctoral degree (8.4%). 7.3% of the alumni had either completed or were in the process of completing a Business degree.

Of the 676 who completed or were currently enrolled in a graduate/professional degree program and provided information, 64.9% attended an institution within the state of Oklahoma. Of the 596 who provided an institution name for their graduate/professional degree program, 45.9% had enrolled in a graduate/professional degree program at Oklahoma State University.

55.6% of respondents reported that their undergraduate degree prepared them very well for continuing their education, while 36.1% indicated that they were adequately prepared for their subsequent degree program.

	2010		2014	
	n	%	n	%
CQ8. Since you completed your OSU undergraduate degree, have you completed another graduate or professional school program, or are you currently enrolled in such a program?				
Yes, currently enrolled	93	11.4%	329	23.8%
Yes, completed a degree	194	23.7%	60	4.3%
No	528	64.5%	989	71.7%
Prefer not to answer	3	0.4%	2	0.1%

Responses by College	2010		2014	
	n	%	n	%
CASN				
Yes, currently enrolled	16	13.0%	70	35.4%
Yes, completed a degree	35	28.5%	4	2.0%
No	72	58.5%	124	62.6%
Prefer not to answer	0	0.0%	0	0.0%

Responses by College	2010		2014	
	n	%	n	%
COE				
Yes, currently enrolled	8	9.9%	36	22.6%
Yes, completed a degree	13	16.0%	6	3.8%
No	60	74.1%	117	73.6%
Prefer not to answer	0	0.0%	0	0.0%

Responses by College	2010		2014	
	n	%	n	%
CAS				
Yes, currently enrolled	42	19.1%	116	32.0%
Yes, completed a degree	56	25.5%	9	2.5%
No	120	54.5%	237	65.3%
Prefer not to answer	2	0.9%	1	0.3%

Responses by College	2010		2014	
	n	%	n	%
CEAT				
Yes, currently enrolled	16	14.0%	29	12.8%
Yes, completed a degree	14	12.3%	4	1.8%
No	84	73.7%	192	85.0%
Prefer not to answer	0	0.0%	1	0.4%

Responses by College	2010		2014	
	n	%	n	%
SSB				
Yes, currently enrolled	7	3.7%	39	12.7%
Yes, completed a degree	45	23.7%	30	9.7%
No	138	72.6%	239	77.6%
Prefer not to answer	0	0.0%	0	0.0%

Responses by College	2010		2014	
	n	%	n	%
Human Sciences				
Yes, currently enrolled	4	4.4%	39	31.0%
Yes, completed a degree	31	34.4%	7	5.6%
No	54	60.0%	80	63.5%
Prefer not to answer	1	1.1%	0	0.0%

2016 OSU Survey of Alumni of Undergraduate Programs

CQ9. What graduate or professional degree are you pursuing or, if you have completed a degree, what degree did you complete? ⁶	2010		2014	
	n	%	n	%
Master's	177	61.9%	222	58.1%
Doctorate	24	8.4%	32	8.4%
Medical	30	10.5%	41	10.7%
Law	9	3.1%	20	5.2%
Business	21	7.3%	28	7.3%
Vet school	17	5.9%	21	5.5%
Other	8	2.8%	18	4.7%
Prefer not to answer	0	0.0	0	0.0%

Responses by College	2010		2014	
CASNR	n	%	n	%
Master's	22	43.1%	38	51.4%
Doctorate	4	7.8%	4	5.4%
Medical	7	13.7%	8	10.8%
Law	2	3.9%	3	4.1%
Business	1	2.0%	1	1.4%
Vet school	13	25.5%	17	23.0%
Other	2	3.9%	3	4.1%
Prefer not to answer	0	0.0%	0	0.0%

	2010		2014	
COE	n	%	n	%
Master's	16	76.2%	32	76.2%
Doctorate	2	9.5%	5	11.9%
Medical	2	9.5%	2	4.8%
Law	0	0.0%	0	0.0%
Business	1	4.8%	1	2.4%
Vet school	0	0.0%	0	0.0%
Other	0	0.0%	2	4.8%
Prefer not to answer	0	0.0%	0	0.0%

CAS	n	%	n	%
Master's	58	59.8%	60	49.6%
Doctorate	13	13.4%	18	14.9%
Medical	12	12.4%	21	17.4%
Law	5	5.2%	9	7.4%
Business	4	4.1%	2	1.7%
Vet school	4	4.1%	4	3.3%
Other	1	1.0%	7	5.8%
Prefer not to answer	0	0.0%	0	0.0%

CEAT	n	%	n	%
Master's	21	70.0%	26	78.8%
Doctorate	5	16.7%	1	3.0%
Medical	0	0.0%	2	6.1%
Law	0	0.0%	0	0.0%
Business	3	10.0%	3	9.1%
Vet school	0	0.0%	0	0.0%
Other	1	3.3%	1	3.0%
Prefer not to answer	0	0.0%	0	0.0%

SSB	n	%	n	%
Master's	36	69.2%	36	53.7%
Doctorate	0	0.0%	0	0.0%
Medical	2	3.8%	0	0.0%
Law	2	3.8%	8	11.9%
Business	10	19.2%	21	31.3%
Vet school	0	0.0%	0	0.0%
Other	2	3.8%	2	3.0%
Prefer not to answer	0	0.0%	0	0.0%

Human Sciences	n	%	n	%
Master's	24	68.6%	30	66.7%
Doctorate	0	0.0%	4	8.9%
Medical	7	20.0%	8	17.8%
Law	0	0.0%	0	0.0%
Business	2	5.7%	0	0.0%
Vet school	0	0.0%	0	0.0%
Other	2	5.7%	3	6.7%
Prefer not to answer	0	0.0%	0	0.0%

	2010		2014	
	<u>n</u>	<u>%</u>	<u>n</u>	<u>%</u>
Not at all	9	3.1%	11	1.3%
Not very well	11	3.8%	18	3.8%
Adequately	108	37.6%	135	40.8%
Very well	157	54.7%	217	52.1%
Prefer not to answer	2	0.7%	5	1.9%

Responses by College	2010		2014	
	<u>n</u>	<u>%</u>	<u>n</u>	<u>%</u>
CASNR				
Not at all	1	2.0%	2	2.7%
Not very well	2	3.9%	2	2.7%
Adequately	18	35.3%	36	48.6%
Very well	29	56.9%	34	45.9%
Prefer not to answer	1	2.0%	0	0.0%

CAS	<u>n</u>	<u>%</u>	<u>n</u>	<u>%</u>
	Not at all	1	1.0%	5
Not very well	4	4.1%	10	8.1%
Adequately	45	45.9%	51	41.5%
Very well	48	49.0%	55	44.7%
Prefer not to answer	0	0.0%	2	1.6%

SSB	<u>n</u>	<u>%</u>	<u>n</u>	<u>%</u>
	Not at all	2	3.8%	1
Not very well	2	3.8%	2	2.9%
Adequately	15	28.8%	13	19.1%
Very well	33	63.5%	52	76.5%
Prefer not to answer	0	0.0%	0	0.0%

COE	2010		2014	
	<u>n</u>	<u>%</u>	<u>n</u>	<u>%</u>
Not at all	3	14.3%	2	4.8%
Not very well	1	4.8%	2	4.8%
Adequately	6	28.6%	14	33.3%
Very well	11	52.4%	23	54.8%
Prefer not to answer	0	0.0%	1	2.4%

CEAT	<u>n</u>	<u>%</u>	<u>n</u>	<u>%</u>
	Not at all	2	6.7%	0
Not very well	0	0.0%	1	3.0%
Adequately	11	36.7%	11	33.3%
Very well	16	53.3%	20	60.6%
Prefer not to answer	1	6.7%	1	3.0%

Human Sciences	<u>n</u>	<u>%</u>	<u>n</u>	<u>%</u>
	Not at all	0	0.0%	1
Not very well	2	5.7%	1	2.2%
Adequately	13	37.1%	10	21.7%
Very well	20	57.1%	33	71.7%
Prefer not to answer	0	0.0%	1	2.2%

⁸ Question was asked only to respondents who indicated they had enrolled in a graduate or professional program.

Names of graduate or professional schools attended by alumni.

Graduate or Professional School⁹

	n	%
<u>Oklahoma Universities⁷:</u>		
Oklahoma State University	273	46.6%
University of Oklahoma	53	9.0%
University of Central Oklahoma	14	2.4%
Oklahoma City University	11	1.9%
University of Tulsa	14	2.4%
Northeastern State University	7	1.2%
Oklahoma Christian University	5	0.8%
East Central University	2	0.3%
Southwestern Oklahoma State University	3	0.5%
Langston University	3	0.5%
Northwestern Oklahoma State University	1	0.2%
Southern Nazarene University	9	1.5%
Caddo Kiowa Technology Center	1	0.2%
Southeastern Oklahoma University	3	0.5%
Cameron University	1	0.2%
Eastern Oklahoma County Tech	1	0.2%
Oklahoma Baptist University	1	0.2%
Oral Roberts University	3	0.5%
Rose State College	2	0.3%
Cameron University	1	0.2%
Meridian Technological Center	1	0.1%
All Oklahoma universities	409	69.8%
<u>Other Universities:</u>		
Angelo State University	1	0.2%
Arizona State University	2	0.3%
Azusa Pacific University	1	0.2%
California Polytechnic State	2	0.3%
Chamberlain University	1	0.2%
Clemson University	1	0.2%
Cleveland Chiropractic University	1	0.2%
Colorado State University	4	0.7%
Creighton University	4	0.4%
Dallas Baptist University	3	0.5%
Dallas Theological Seminary	2	0.3%
Divinity St. Paul School	1	0.2%
Eastern Kentucky University	1	0.2%
Florida State University	1	0.2%
George Washington University	1	0.2%
Georgia Institute of Technology	1	0.2%
Georgia State University	2	0.3%
Gordon Conwell Theological Seminary	1	0.2%

⁹ Students who listed more than one institution were counted multiple times. Percentages were based on the total number of institutional names submitted.

Graduate or Professional School

	<u>N</u>	<u>%</u>
<u>Other Universities:</u> (continued)		
Grand Canyon University	1	0.2%
Hampton University	1	0.2%
Hardin-Simmons University	1	0.2%
Harvard University	1	0.2%
Idaho State University	1	0.2%
Iowa State University	2	0.3%
Kansas City University	1	0.2%
Kansas State University	4	0.7%
Kent State University	1	0.2%
Liberty University	2	0.3%
Louisiana State University	1	0.2%
Marshall University	1	0.2%
Mayo Graduate School	1	0.2%
McNeese State University	1	0.2%
Michigan State University	1	0.2%
Midwestern Baptist Theological Seminary	1	0.2%
Midwestern State University	1	0.2%
Midwestern Univ. College of Dental Medic	1	0.2%
Missouri Science and Technology	1	0.2%
Missouri State University	1	0.2%
Murray State University	1	0.2%
National College of Natural Medicine	1	0.2%
New York University	1	0.2%
Northwestern University	1	0.2%
Ohio State University	2	0.3%
Ohio University	1	0.2%
Pittsburgh State University	1	0.2%
Purdue University	5	0.9%
Rice University	2	0.3%
Rio Salado Community College	1	0.2%
Rosalind Franklin University	1	0.2%
Ross University	1	0.2%
Saint Francis Medical Center	1	0.2%
Southern Arkansas University	1	0.2%
Southern Methodist University	5	0.9%
Southwest Baptist University	1	0.2%
St. Leo University	1	0.2%
Texas A&M University	4	0.7%
Texas Christian University	1	0.2%
Texas State University	2	0.3%
Texas Tech University	3	0.5%
Texas Woman's University	3	0.5%
The American College	1	0.2%
The American University of the Caribbean	1	0.2%
Trevecca Nazarene University	1	0.2%
University of Alabama	2	0.3%
University of Alabama at Huntsville	1	0.2%

Graduate or Professional School

	n	%
<u>Other Universities:</u> (continued)		
University of Arkansas	8	1.37%
University of Baltimore	1	0.2%
University of California at Berkley	1	0.2%
University of California at Riverside	1	0.2%
University of Cambridge	1	0.2%
University of Central Arkansas	1	0.2%
University of Central Florida	1	0.2%
University of Central Missouri	1	0.2%
University of Colorado	3	0.5%
University of Dayton	1	0.2%
University of Denver	1	0.2%
University of Edinburgh	1	0.2%
University of Florida	4	0.7%
University of Georgia	1	0.2%
University of Goldsmith	1	0.2%
University of Houston	1	0.2%
University of Houston at Clear Lake	1	0.2%
University of Illinois	1	0.2%
University of Kansas	7	1.2%
University of Kentucky	1	0.2%
University of Louisiana at Monroe	1	0.2%
University of Missouri	2	0.3%
University of Missouri at Columbia	1	0.2%
University of Missouri at Kansas City	1	0.2%
University of Missouri at St. Louis	1	0.2%
University of Nebraska at Lincoln	1	0.2%
University of North Texas	1	0.2%
University of North Texas at Fort Worth	1	0.2%
University of Phoenix	2	0.3%
University of Pittsburgh	1	0.2%
University of South Alabama	1	0.2%
University of Southern California	1	0.2%
University of St. Thomas at Houston	1	0.2%
University of Texas	2	0.3%
University of Texas at Arlington	1	0.2%
University of Texas at Austin	2	0.3%
University of Texas at Dallas	3	0.5%
University of Texas at El Paso	1	0.2%
University of Texas at Southwestern	1	0.2%
University of Texas at Tyler	1	0.2%
University of Texas Medical Branch	1	0.2%
University of Virginia	1	0.2%
University of Washington	1	0.2%
University of West Florida	1	0.2%
Vanderbilt University	1	0.2%
Washburn University School of Law	1	0.2%
Washington State University	1	0.2%
Western Michigan University	1	0.2%
Western University of Health Sciences	1	0.2%

Graduate or Professional School

n %

Other Universities: (continued)

Wichita State University	4	0.7%
Worcester State University	1	0.2%
All other Universities	177	30.2% *

**Totals may not add up due to round off error.*

Overall Satisfaction

92% of respondents were satisfied or very satisfied with quality of instruction at Oklahoma State University. 73.9% were satisfied or very satisfied with academic advising and 93.2% were either satisfied or very satisfied with their overall educational experience at Oklahoma State University.

	2010		2014	
	n	%	n	%
Very dissatisfied	7	0.9%	12	0.9%
Dissatisfied	19	2.3%	22	1.6%
Neutral	41	5.0%	74	5.4%
Satisfied	373	45.9%	597	43.6%
Very satisfied	372	45.8%	663	48.4%
Prefer not to answer	0	0.0%	1	0.1%

Responses by College

	2010		2014	
	n	%	n	%
Very dissatisfied	0	0.0%	1	0.5%
Dissatisfied	1	0.8%	4	2.0%
Neutral	9	7.3%	8	4.0%
Satisfied	50	40.7%	88	44.4%
Very satisfied	63	51.2%	97	49.0%
Prefer not to answer	0	0.0%	0	0.0%

	2010		2014	
	n	%	n	%
Very dissatisfied	0	0.0%	2	1.3%
Dissatisfied	6	7.5%	1	0.6%
Neutral	3	3.8%	3	1.9%
Satisfied	39	48.8%	64	40.5%
Very satisfied	32	40.0%	88	55.7%
Prefer not to answer	0	0.0%	0	0.0%

	n	%	n	%
Very dissatisfied	3	1.4%	5	1.4%
Dissatisfied	6	2.8%	4	1.1%
Neutral	14	6.5%	31	8.7%
Satisfied	96	44.2%	136	38.0%
Very satisfied	98	45.2%	181	50.6%
Prefer not to answer	0	0.0%	1	0.3%

	n	%	n	%
Very dissatisfied	2	1.8%	0	0.0%
Dissatisfied	0	0.0%	1	0.4%
Neutral	1	0.9%	12	5.3%
Satisfied	58	51.3%	120	53.3%
Very satisfied	52	46.0%	92	40.9%
Prefer not to answer	0	0.0%	0	0.0%

	n	%	n	%
Very dissatisfied	0	0.0%	4	1.3%
Dissatisfied	4	2.1%	7	2.3%
Neutral	13	6.8%	14	4.6%
Satisfied	91	47.9%	134	44.1%
Very satisfied	82	43.2%	145	47.7%
Prefer not to answer	0	0.0%	0	0.0%

	n	%	n	%
Very dissatisfied	2	2.2%	0	0.0%
Dissatisfied	2	2.2%	5	4.0%
Neutral	1	1.1%	6	4.8%
Satisfied	39	43.8%	55	43.7%
Very satisfied	45	50.6%	60	47.6%
Prefer not to answer	0	0.0%	0	0.0%

	2010		2014	
	<u>n</u>	<u>%</u>	<u>n</u>	<u>%</u>
Very dissatisfied	32	4.0%	42	3.1%
Dissatisfied	78	9.6%	111	8.1%
Neutral	126	15.6%	174	12.7%
Satisfied	299	36.9%	435	31.7%
Very satisfied	271	33.5%	609	44.4%
Prefer not to answer	4	0.5%	2	0.1%

Responses by College

	2010		2014	
	<u>n</u>	<u>%</u>	<u>n</u>	<u>%</u>
Very dissatisfied	2	1.6%	3	1.5%
Dissatisfied	6	4.9%	11	5.6%
Neutral	14	11.4%	14	7.1%
Satisfied	40	32.5%	50	25.3%
Very satisfied	61	49.6%	120	60.6%
Prefer not to answer	0	0.0%	0	0.0%

	2010		2014	
	<u>n</u>	<u>%</u>	<u>n</u>	<u>%</u>
Very dissatisfied	2	2.5%	5	3.1%
Dissatisfied	8	10.0%	8	5.0%
Neutral	10	12.5%	11	6.9%
Satisfied	31	38.8%	36	22.6%
Very satisfied	29	36.3%	98	61.6%
Prefer not to answer	0	0.0%	1	0.6%

	<u>n</u>	<u>%</u>	<u>n</u>	<u>%</u>
	Very dissatisfied	13	6.0%	24
Dissatisfied	28	13.0%	39	10.8%
Neutral	31	14.4%	56	15.5%
Satisfied	70	32.4%	108	29.9%
Very satisfied	74	34.3%	134	37.1%
Prefer not to answer	0	0.0%	0	0.0%

	<u>n</u>	<u>%</u>	<u>n</u>	<u>%</u>
	Very dissatisfied	2	1.8%	4
Dissatisfied	7	6.2%	25	11.1%
Neutral	20	17.7%	30	13.3%
Satisfied	51	45.1%	88	39.1%
Very satisfied	32	28.3%	78	34.7%
Prefer not to answer	1	0.9%	0	0.0%

	<u>n</u>	<u>%</u>	<u>n</u>	<u>%</u>
	Very dissatisfied	11	5.8%	5
Dissatisfied	17	8.9%	19	6.3%
Neutral	40	21.1%	39	12.8%
Satisfied	77	40.5%	106	34.9%
Very satisfied	42	22.1%	134	44.1%
Prefer not to answer	3	1.6%	1	0.3%

	<u>n</u>	<u>%</u>	<u>n</u>	<u>%</u>
	Very dissatisfied	2	2.3%	1
Dissatisfied	12	13.6%	9	7.1%
Neutral	11	12.5%	24	19.0%
Satisfied	30	34.1%	47	37.3%
Very satisfied	33	37.5%	45	35.7%
Prefer not to answer	0	0.0%	0	0.0%

	2010		2014	
	<u>n</u>	<u>%</u>	<u>n</u>	<u>%</u>
CQ13. How satisfied are you with your overall educational experience at OSU?				
Very dissatisfied	3	0.4%	8	0.6%
Dissatisfied	16	2.0%	20	1.5%
Neutral	36	4.4%	65	4.7%
Satisfied	307	37.9%	469	34.2%
Very satisfied	447	55.3%	808	58.9%
Prefer not to answer	0	0.0%	1	0.1%

Responses by College

	2010		2014	
	<u>n</u>	<u>%</u>	<u>n</u>	<u>%</u>
CASNR				
Very dissatisfied	0	0.0%	1	0.5%
Dissatisfied	2	1.6%	3	1.5%
Neutral	5	4.1%	5	2.5%
Satisfied	41	33.3%	76	38.2%
Very satisfied	75	61.0%	114	57.3%
Prefer not to answer	0	0.0%	0	0.0%

	2010		2014	
	<u>n</u>	<u>%</u>	<u>n</u>	<u>%</u>
COE				
Very dissatisfied	0	0.0%	2	1.3%
Dissatisfied	3	3.8%	1	0.6%
Neutral	3	3.8%	6	3.8%
Satisfied	29	36.3%	40	25.2%
Very satisfied	45	56.3%	110	69.2%
Prefer not to answer	0	0.0%	0	0.0%

	<u>n</u>	<u>%</u>	<u>n</u>	<u>%</u>
	CAS			
Very dissatisfied	2	0.9%	4	1.1%
Dissatisfied	4	1.9%	10	2.8%
Neutral	16	7.4%	24	6.6%
Satisfied	90	41.7%	133	36.8%
Very satisfied	104	48.1%	189	52.4%
Prefer not to answer	0	0.0%	1	0.3%

	<u>n</u>	<u>%</u>	<u>n</u>	<u>%</u>
	CEAT			
Very dissatisfied	0	0.0%	0	0.0%
Dissatisfied	0	0.0%	0	0.0%
Neutral	3	2.7%	16	7.1%
Satisfied	44	38.9%	88	39.1%
Very satisfied	66	58.4%	121	53.8%
Prefer not to answer	0	0.0%	0	0.0%

	<u>n</u>	<u>%</u>	<u>n</u>	<u>%</u>
	SSB			
Very dissatisfied	1	0.5%	1	0.3%
Dissatisfied	4	2.1%	5	1.7%
Neutral	8	4.3%	11	3.6%
Satisfied	75	39.9%	96	31.8%
Very satisfied	100	53.2%	189	62.6%
Prefer not to answer	0	0.0%	0	0.0%

	<u>n</u>	<u>%</u>	<u>n</u>	<u>%</u>
	Human Sciences			
Very dissatisfied	0	0.0%	0	0.0%
Dissatisfied	3	3.4%	1	0.8%
Neutral	1	1.1%	3	2.4%
Satisfied	28	31.5%	36	28.8%
Very satisfied	57	64.0%	85	68.0%
Prefer not to answer	0	0.0%	0	0.0%

Residency

Each alumnus who completed the survey was asked to provide his or her current zip code. A total of 2,075 valid zip codes were obtained. 66.7% of alumni who provided a valid zip code were living in Oklahoma and 33.3% of were living out of state. Approximately 7% of the total survey respondents did not provide a valid zip code.

Region	n	%
--------	---	---

Oklahoma:

Stillwater	256	12.3%
Tulsa	276	13.3%
Oklahoma City	193	9.3%
Other Oklahoma cities	659	31.8%
All Oklahoma	1384	66.7%

Surrounding States:

Texas	330	15.9%
Kansas	53	2.6%
Colorado	36	1.7%
Missouri	21	1.0%
Arkansas	25	1.2%
New Mexico	4	0.2%
All surrounding states	469	22.6%

	n	%
--	---	---

Other States/Countries:

Alaska	2	0.1%
Alabama	4	0.2%
Arizona	10	0.5%
California	24	1.2%
Connecticut	1	0.0%
D.C.	1	0.0%
Delaware	1	0.0%
Florida	22	1.1%
Georgia	11	0.5%
Hawaii	2	0.1%
Iowa	7	0.3%
Idaho	1	0.0%
Illinois	18	0.9%
Indiana	6	0.3%
Kentucky	2	0.1%
Louisiana	5	0.2%
Massachusetts	5	0.2%
Maryland	5	0.2%
Michigan	2	0.1%
Minnesota	2	0.1%
Mississippi	1	0.0%
North Carolina	6	0.3%

	n	%
--	---	---

North Dakota	1	0.0%
Nebraska	8	0.4%
New Jersey	4	0.2%
Nevada	1	0.0%
New York	11	0.5%
Ohio	8	0.4%
Oregon	3	0.1%
Pennsylvania	7	0.3%
South Carolina	6	0.3%
South Dakota	1	0.0%
Tennessee	9	0.4%
Utah	1	0.0%
Virginia	10	0.5%
Washington	8	0.4%
Wisconsin	1	0.0%
West Virginia	5	0.2%
Wyoming	1	0.0%
All other States	222	10.7%

Note: A total of 2,075 participants provided a valid zip code. 0.0% indicates a percentage < .01.
Totals may not add up due to round off error.